

Mary Bearden
Cell: 507-951-6152
marybearden@charter.net
Commercial Broker

2450 Marion Road SE
Rochester, MN

Conveniently located near I-90 and Hwy 52

Bearden Stevens Realty Corp.

2450 Marion Road SE
Rochester, MN



Industrial Commercial Development

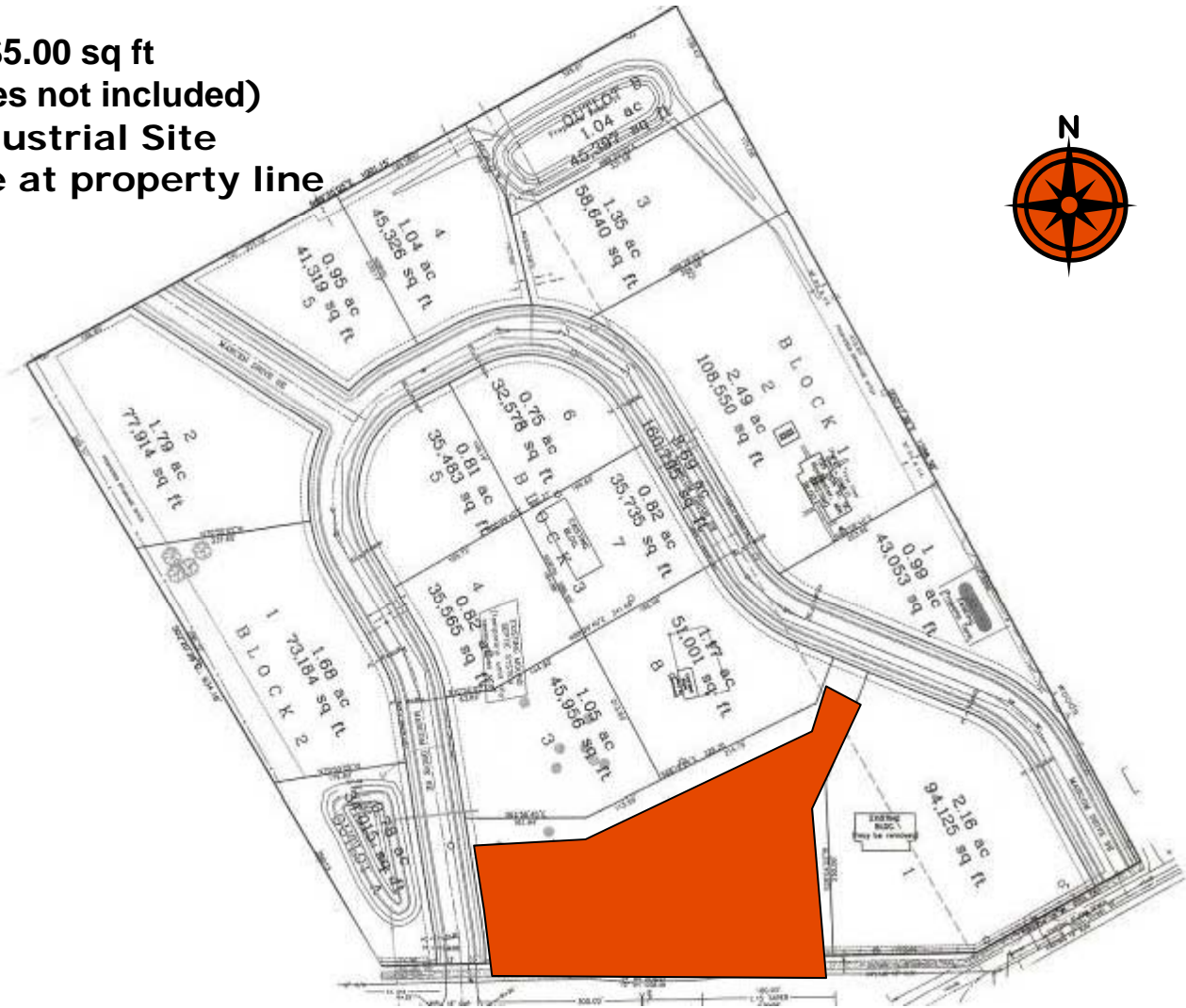
Bearden Stevens Realty Corp.

Preliminary Development Plan

20 acres +/- @ \$5.00 sq ft
(roads and city services not included)

Commercial/Industrial Site

City services available at property line



Bearden Stevens Realty Corp.

Interim Grading Complete Fall of 2005



Bearden Stevens Realty Corp.



2450 Marlon Rd SE, Rochester, MN 559